

THE MASTER AGREEMENT
EVANSVILLE COMMUNITY SCHOOL DISTRICT
BOARD OF EDUCATION

AND

EVANSVILLE EDUCATION ASSOCIATION
FOR THE 2018-19 MASTER AGREEMENT

ARTICLE 1: Recognition

The Evansville Community School District Board of Education recognizes the Evansville Education Association as the exclusive representative for the collective bargaining of base wages for all regular full-time and regular professional employees employed by the Evansville Community School District, excluding supervisory, confidential, managerial employees and all other employees.

ARTICLE 2: Wage

Attached is Appendix A, listing of the 2018-19 bargaining unit members employed in the authorized positions as of the date of this Master Agreement, and their total base wage for the 2018-19 school year.

ARTICLE 3: Duration

The Master Agreement shall have a term commencing July 1, 2018, and ending June 30, 2019.

Appendix A

2018-19 PROFESSIONAL EDUCATORS

FTE	Full Name	2018-19 Base Wage
1	ADAMS, COURTNEY RAE	\$ 57,285.30
1	ALME, ANN L	\$ 62,205.30
1	ARDISSON, MEGAN	\$ 49,272.42
1	BENSON, BRIAN	\$ 70,741.29
1	BETHKE, THOMAS R	\$ 70,741.29
1	BEYERL, ABBY D	\$ 48,192.83
0.75	BISGROVE, TRISTRAM C	\$ 20,531.30
1	BJUGSTAD, RENEE M	\$ 70,741.29
1	BONOW, MELISSA	\$ 45,529.30
1	BRUMMOND, NANCY L	\$ 48,544.30
1	BUTTCHEN, HEATHER J	\$ 56,885.30
1	BUTTCHEN, KENDALL RON	\$ 41,153.30
1	COATS, GARTH A	\$ 39,346.83
1	COBB, DANIEL G	\$ 57,685.27
1	COLLINS, GINA M	\$ 70,749.30
1	CREEK-HESSLER, JULIE	\$ 70,741.29
1	CURTIS, BRUCE H	\$ 70,741.29
1	CZERWONKA, MIKE R	\$ 61,405.30
1	DEEGAN, MOLLY D	\$ 40,753.30
1	DEMMIN, DARREN J	\$ 61,005.30
1	DEMROW, KATELYN ELIZABETH	\$ 41,553.30
1	DRAEVING, TIFFANY J	\$ 65,658.83
1	HOLLISTER, NICOLE K	\$ 40,681.42
1	ELLIS, CRAIG M	\$ 45,346.83
1	FANNING, RICHARD G	\$ 70,741.29
1	FANTA STROIK, KELLY D	\$ 65,805.30
1	FEENEY, STEPHEN	\$ 70,741.29
1	FERRELL, LESLIE K	\$ 69,633.46
0.85	FETTIG, SHARI L	\$ 37,679.54
1	FIRGENS, AMANDA JOLENE	\$ 55,285.30
1	FORSTER, NICOLE D	\$ 61,005.30
1	FRITZ, DEBRA L	\$ 63,405.22

Appendix A

1	GALLMAN, DARLENE	\$ 69,633.46
1	GOMEZ, CARLA	\$ 65,805.30
1	GRANSEE, KELLEY A	\$ 70,741.29
0.8	GREVE, NANCY	\$ 52,643.85
1	GRIBBLE, AMY L	\$ 69,633.46
0.2	GROVESTEN, JO ANN	\$ 9,664.11
1	HAMMOND, JOLENE M	\$ 67,520.04
1	HANKE, PETER C	\$ 69,633.46
1	HANNIBAL, MEAGHAN K	\$ 69,633.46
1	HANSON, JOHN J	\$ 70,741.29
1	HARSEVOORT, ROBERT E	\$ 70,741.29
1	HOLM, JENNIFER G	\$ 52,217.42
1	HOLMES, AMANDA A	\$ 44,329.30
1	HORGEN, KATHRYN MICHEL	\$ 62,205.30
1	HUMBERG, CHRISTINE M	\$ 55,685.27
1	HURDA, DANA R	\$ 57,285.30
1	JEREMIASON, BETH M	\$ 48,544.27
1	JERSTAD, BRANDON R	\$ 39,346.83
1	JOHNSON, JENNIFER RAE	\$ 44,257.42
1	JOHNSON, KATHERINE M	\$ 54,364.30
1	JOHNSON, STEPHANIE L	\$ 63,405.30
1	KEYSER, SONYA	\$ 55,285.22
1	KNUDSON, LINDA J	\$ 55,685.30
1	KOPF, DAVID C	\$ 70,741.29
1	KOPF, GRETCHEN L	\$ 67,520.04
1	KOSTROUN, CHARITY A	\$ 69,633.46
1	KOSTROUN, ROBERT D	\$ 69,633.46
1	RASMUSSEN, KERI L	\$ 42,729.30
1	KRUCKENBERG, CATHY	\$ 70,741.29
1	KRUPKE, STEVEN H	\$ 70,741.29
1	KUNDERT, LAURINDA K	\$ 63,405.30
1	KVALHEIM, JAMES AARON	\$ 45,129.30
1	LANGAN, COLIN L	\$ 44,257.42
1	LEAHY, AMANDA JAYE	\$ 51,889.30
1	LEHMAN, ANDREW R	\$ 70,741.29

Appendix A

1	MARLIN, ALISON M	\$ 41,153.30
1	MARSHALL, KIMBERLY ANN	\$ 44,329.19
1	MARTIN, LAURA ERIN	\$ 42,729.30
1	MARTY JR, RODNEY H	\$ 70,741.29
1	MARTY, RACHEL B	\$ 67,520.02
1	MAVES, JENNIFER N	\$ 61,805.30
1	MCCLELLAN, SANDRA B	\$ 65,805.30
1	MCDANIEL, KATIE ELIZABETH	\$ 48,544.25
1	FISCHER, HEATHER B	\$ 55,285.22
1	MCNAMARA, SAMANTHA R	\$ 46,548.83
1	MESSLING, PENNY JO	\$ 70,741.29
1	MEUER, JERAD D	\$ 49,466.83
1	MILLER, DEBORAH L	\$ 70,741.29
1	MILLER, KEITH R	\$ 70,741.29
1	MILLS, CAROLYN M	\$ 70,741.29
1	MOHNS, JENNIFER J	\$ 70,741.29
1	MOHRBACHER, JESSICA A	\$ 44,329.30
1	MUMM, JOANN M	\$ 48,544.30
1	NELSON, TRICIA A	\$ 40,548.83
1	NIMZ, PATRICIA	\$ 70,741.29
1	OSWALD, BETH A	\$ 69,633.46
1	OURS, KELLI L	\$ 40,281.42
1	PAPENDIECK, SANDRA K	\$ 70,741.29
1	PICKERING, DEANNA D	\$ 55,685.26
1	PROPER, MEGHANN BROOKE	\$ 48,532.22
1	REDDERS, DEEJAY R	\$ 61,005.19
1	REUTER, KARI L	\$ 43,895.44
1	RIEL, TONY DAVID	\$ 48,544.30
1	ROSS, CHRISTINA S	\$ 61,005.30
1	RUNKLE, JENNY	\$ 63,405.30
1	SCHIELDT, CORINE LYN	\$ 61,405.30
1	SCHMICK, TRENT D	\$ 62,205.30
1	SCHMOLDT, TERRIE	\$ 61,005.19
1	SCHULLO, CHRISTINE M	\$ 70,741.29
1	SCHULTZ, CONSTANCE J	\$ 69,633.46

Appendix A

1	SCHWENGELS, KARI LYNN	\$ 55,353.30
1	SCHWENN, DOUGLAS	\$ 55,685.22
1	SENDELBACH, KARLA	\$ 67,520.04
1	SHOTLIFF, BRITTANY N.	\$ 40,353.30
1	SIMONSON, MARK T	\$ 46,353.25
1	SMITH, RENAE J	\$ 69,633.46
1	SPERANDEO-WEHNER, KIM DANIELLE	\$ 51,089.30
1	STALDER, ELIZABETH S	\$ 41,553.30
1	STANDISH, LISA	\$ 69,633.46
1	STANO, MARK A	\$ 57,685.27
1	STATTON, KENDRA S	\$ 48,544.30
1	SWARTWOUT, AIMEE J	\$ 46,353.26
1	TEIGEN, LORI R	\$ 60,933.34
1	TEPP, SYDNEY N	\$ 39,346.83
1	TESKE, DANA MARIE	\$ 44,329.30
1	TWAY, ABBEY C	\$ 45,529.30
1	TYSON, MARCELA	\$ 65,405.30
1	VELASQUEZ-KLOPP, MICHELLE M	\$ 55,285.22
1	VIKEN, PENNY A	\$ 70,741.29
1	VOSSEKUIL, GREGORY T	\$ 55,285.30
1	WALLISCH, TAMARA M	\$ 46,073.14
1	WHITE, SAMANTHA	\$ 52,217.42
1	WICKERSHAM, KARLA J	\$ 57,685.27
1	WIEMILLER, ANTHONY J	\$ 55,685.27
1	WOLFGRAM, CHRISTAL SUE	\$ 50,370.83
1	WOLLINGER, KIMBERLY A	\$ 70,741.29
1	WOPAT, JONATHAN WILLIAM	\$ 50,689.21
1	YOERGER, RUTH ANN	\$ 70,741.29
1	ZBLEWSKI, CYNTHIA A	\$ 67,520.04
1	ZBLEWSKI, DOUG E	\$ 57,685.30

Appendix A

Evansville Community School District
EEA Appendix A Base Wage

For the EEA:

For the Board of Education:

Dee Jay Redders

Melissa Hammann, President

Mark Stano

Kathi Swanson, Vice President

Julie Creek-Hessler

Curtis Nyhus, Treasurer

Betsy Stalder

Jerry Roth, Superintendent

John Hansen

Jamie Merath, Business Manager

Michelle Velasque-Klopp

Date

Date

2018-19 PROFESSIONAL EDUCATORS		
FTE	Full Name	Supplemental Pay
1	ADAMS, COURTNEY RAE	13.655
1	ALME, ANN L	13.655
1	ARDISSON, MEGAN	13.655
1	BENSON, BRIAN	13.655
1	BETHKE, THOMAS R	13.655
1	<i>BEYERL, ABBY D</i>	13.655
0.75	BISGROVE, TRISTRAM C	10.24125
1	BJUGSTAD, RENEE M	13.655
1	BONOW, MELISSA	13.655
1	BRUMMOND, NANCY L	13.655
1	BUTTCHEN, HEATHER J	13.655
1	BUTTCHEN, KENDALL RON	13.655
1	<i>COATS, GARTH A</i>	13.655
1	COBB, DANIEL G	13.655
1	COLLINS, GINA M	13.655
1	CREEK-HESSLER, JULIE	13.655
1	CURTIS, BRUCE H	13.655
1	CZERWONKA, MIKE R	13.655
1	DEEGAN, MOLLY D	13.655
1	DEMMIN, DARREN J	13.655
1	DEMROW, KATELYN ELIZABETH	13.655
1	<i>DRAEVING, TIFFANY J</i>	13.655
1	HOLLISTER, NICOLE K	13.655
1	<i>ELLIS, CRAIG M</i>	13.655
1	FANNING, RICHARD G	13.655
1	FANTA STROIK, KELLY D	13.655
1	FEENEY, STEPHEN	13.655
1	FERRELL, LESLIE K	13.655
0.85	FETTIG, SHARI L	11.60675
1	FIRGENS, AMANDA JOLENE	13.655

1	FORSTER, NICOLE D	13.655
1	FRITZ, DEBRA L	13.655
1	GALLMAN, DARLENE	13.655
1	GOMEZ, CARLA	13.655
1	GRANSEE, KELLEY A	13.655
0.8	GREVE, NANCY	10.924
1	GRIBBLE, AMY L	13.655
0.2	GROVESTEEEN, JO ANN	2.731
1	HAMMOND, JOLENE M	13.655
1	HANKE, PETER C	13.655
1	HANNIBAL, MEAGHAN K	13.655
1	HANSON, JOHN J	13.655
1	HARSEVOORT, ROBERT E	13.655
1	HOLM, JENNIFER G	13.655
1	HOLMES, AMANDA A	13.655
1	HORGEN, KATHRYN MICHEL	13.655
1	HUMBERG, CHRISTINE M	13.655
1	HURDA, DANA R	13.655
1	JEREMIASON, BETH M	13.655
1	<i>JERSTAD, BRANDON R</i>	13.655
1	JOHNSON, JENNIFER RAE	13.655
1	JOHNSON, KATHERINE M	13.655
1	JOHNSON, STEPHANIE L	13.655
1	KEYSER, SONYA	13.655
1	KNUDSON, LINDA J	13.655
1	KOPF, DAVID C	13.655
1	KOPF, GRETCHEN L	13.655
1	KOSTROUN, CHARITY A	13.655
1	KOSTROUN, ROBERT D	13.655
1	RASMUSSEN, KERI L	13.655
1	KRUCKENBERG, CATHY	13.655
1	KRUPKE, STEVEN H	13.655
1	KUNDERT, LAURINDA K	13.655

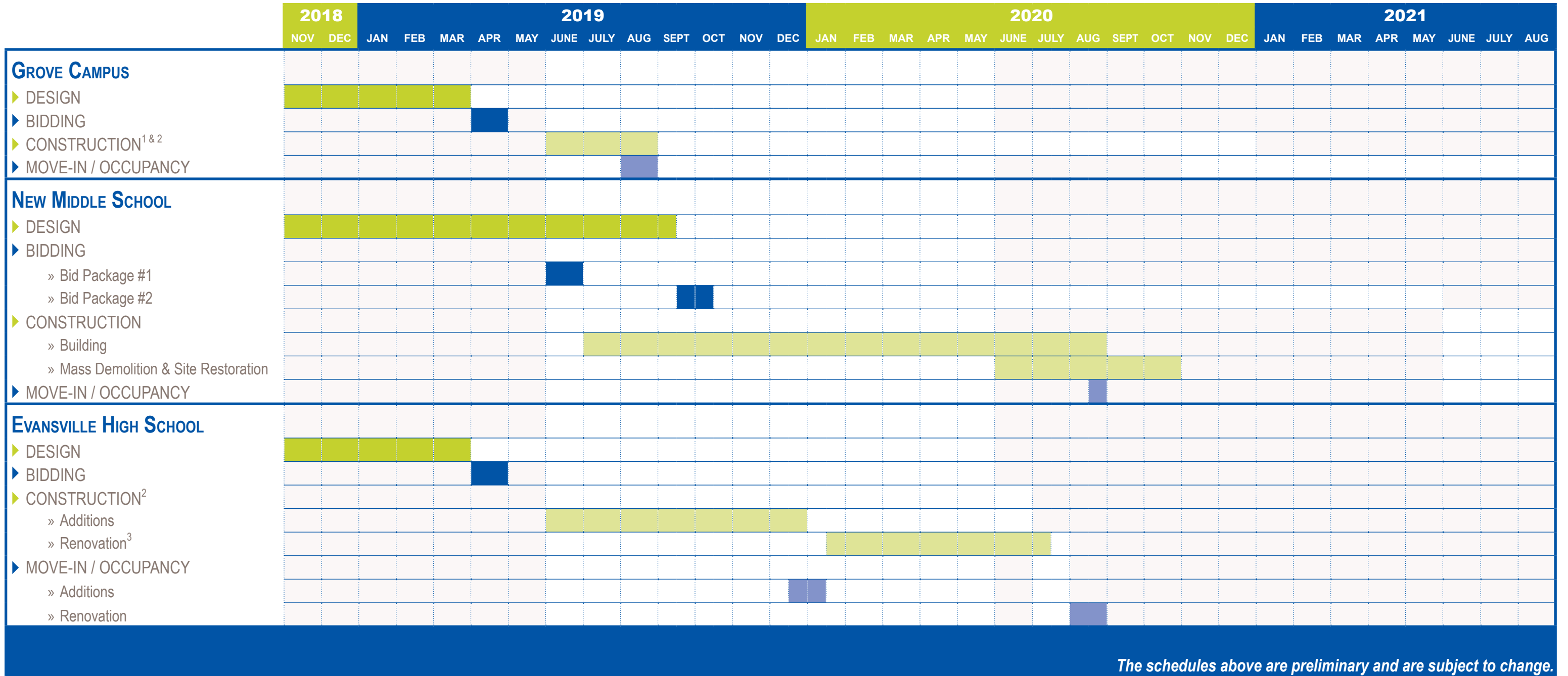
1	KVALHEIM, JAMES AARON	13.655
1	LANGAN, COLIN L	13.655
1	LEAHY, AMANDA JAYE	13.655
1	LEHMAN, ANDREW R	13.655
1	MARLIN, ALISON M	13.655
1	MARSHALL, KIMBERLY ANN	13.655
1	MARTIN, LAURA ERIN	13.655
1	MARTY JR, RODNEY H	13.655
1	MARTY, RACHEL B	13.655
1	MAVES, JENNIFER N	13.655
1	MCCLELLAN, SANDRA B	13.655
1	MCDANIEL, KATIE ELIZABETH	13.655
1	FISCHER, HEATHER B	13.655
1	<i>MCNAMARA, SAMANTHA R</i>	13.655
1	MESSLING, PENNY JO	13.655
1	<i>MEUER, JERAD D</i>	13.655
1	MILLER, DEBORAH L	13.655
1	MILLER, KEITH R	13.655
1	MILLS, CAROLYN M	13.655
1	MOHNS, JENNIFER J	13.655
1	MOHRBACHER, JESSICA A	13.655
1	MUMM, JOANN M	13.655
1	<i>NELSON, TRICIA A</i>	13.655
1	NIMZ, PATRICIA	13.655
1	OSWALD, BETH A	13.655
1	OURS, KELLI L	13.655
1	PAPENDIECK, SANDRA K	13.655
1	PICKERING, DEANNA D	13.655
1	PROPER, MEGHANN BROOKE	13.655
1	REDDERS, DEEJAY R	13.655
1	REUTER, KARI L	13.655
1	RIEL, TONY DAVID	13.655
1	ROSS, CHRISTINA S	13.655

1	RUNKLE, JENNY	13.655
1	SCHIELDT, CORINE LYN	13.655
1	SCHMICK, TRENT D	13.655
1	SCHMOLDT, TERRIE	13.655
1	SCHULLO, CHRISTINE M	13.655
1	SCHULTZ, CONSTANCE J	13.655
1	SCHWENGELS, KARI LYNN	13.655
1	SCHWENN, DOUGLAS	13.655
1	SENDELBACH, KARLA	13.655
1	SHOTLIFF, BRITTANY N.	13.655
1	SIMONSON, MARK T	13.655
1	SMITH, RENAE J	13.655
1	SPERANDEO-WEHNER, KIM DANIELLE	13.655
1	STALDER, ELIZABETH S	13.655
1	STANDISH, LISA	13.655
1	STANO, MARK A	13.655
1	STATTON, KENDRA S	13.655
1	SWARTWOUT, AIMEE J	13.655
1	TEIGEN, LORI R	13.655
1	<i>TEPP, SYDNEY N</i>	13.655
1	TESKE, DANA MARIE	13.655
1	TWAY, ABBEY C	13.655
1	TYSON, MARCELA	13.655
1	VELASQUEZ-KLOPP, MICHELLE M	13.655
1	VIKEN, PENNY A	13.655
1	VOSSEKUIL, GREGORY T	13.655
1	WALLISCH, TAMARA M	13.655
1	WHITE, SAMANTHA	13.655
1	WICKERSHAM, KARLA J	13.655
1	WIEMILLER, ANTHONY J	13.655
1	<i>WOLFGRAM, CHRISTAL SUE</i>	13.655
1	WOLLINGER, KIMBERLY A	13.655
1	WOPAT, JONATHAN WILLIAM	13.655

Appendix A[Document title]

1	YOERGER, RUTH ANN	13.655
1	ZBLEWSKI, CYNTHIA A	13.655
1	ZBLEWSKI, DOUG E	13.655

PRELIMINARY PROJECT SCHEDULES - OPTION #1

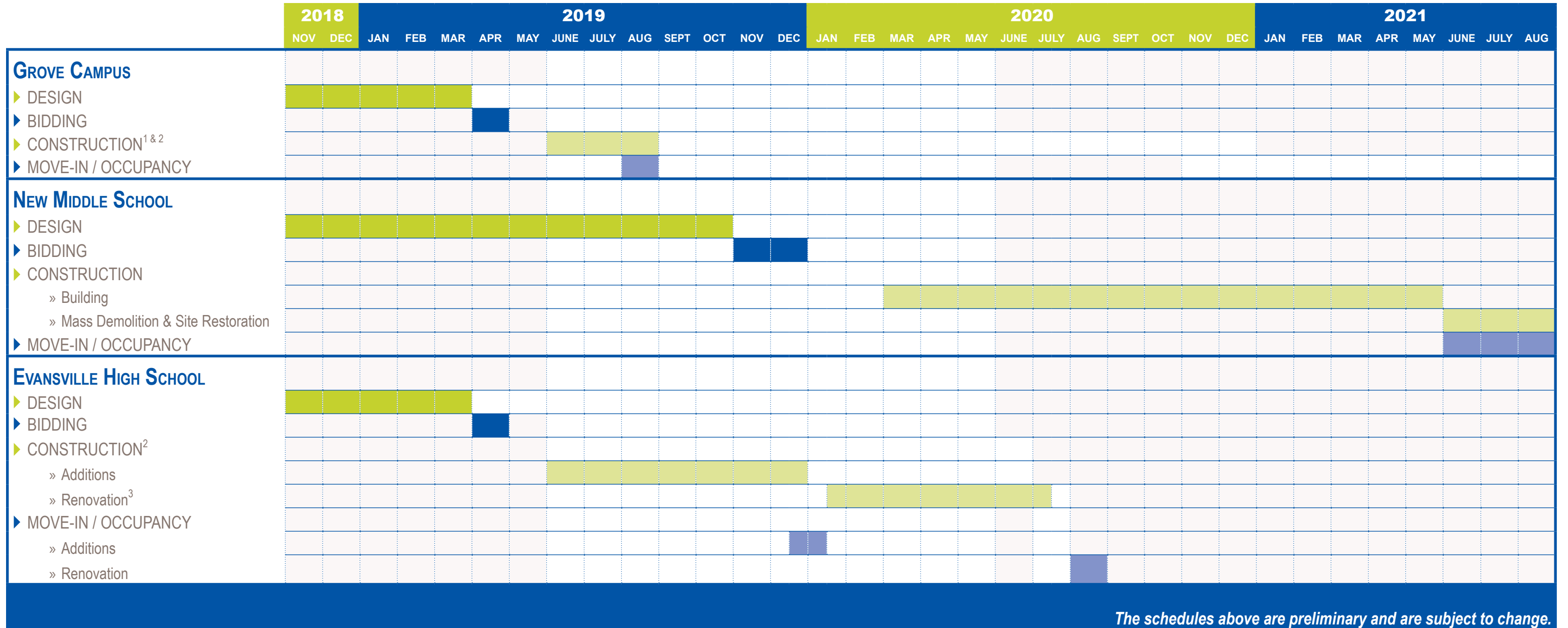


The schedules above are preliminary and are subject to change.

NOTES

1. Third Street extension at Grove Campus could be completed at any time as it should have minimal impact on school operations.
2. Grove Campus and High School roofing may be better completed in summer 2020 as many roofers may already be full for summer 2019 work by the time bids are solicited from them.
3. If renovations do not affect delivery of curriculum during Fall 2019, they could be completed in summer 2019 which would allow the complete project (addition and renovations) to be completed in December 2019.

PRELIMINARY PROJECT SCHEDULES - OPTION #2



NOTES

1. Third Street extension at Grove Campus could be completed at any time as it should have minimal impact on school operations.
2. Grove Campus and High School roofing may be better completed in summer 2020 as many roofers may already be full for summer 2019 work by the time bids are solicited from them.
3. If renovations do not affect delivery of curriculum during Fall 2019, they could be completed in summer 2019 which would allow the complete project (addition and renovations) to be completed in December 2019.